



Recall 2022-030

Claim Preparation & Repair Instructions

Please complete a warranty claim pre-authorization request using the following codes & labor times:

LABOR:	Operation Code:	910026
	Fault Code:	Recall
	Labor Time:	2.4 hrs.
	Administrative Allowance:	.1 hrs. per unit
PARTS:	Shop Supplies (Zip Ties)	Claim at 5% of Labor

PRE-AUTH: Promptly file electronic pre-authorization form. Photos for damaged wire or thermal events are required. Photos are not required of wire securement or inspection.

REPAIR INSTRUCTIONS: See attached step-by-step instructions

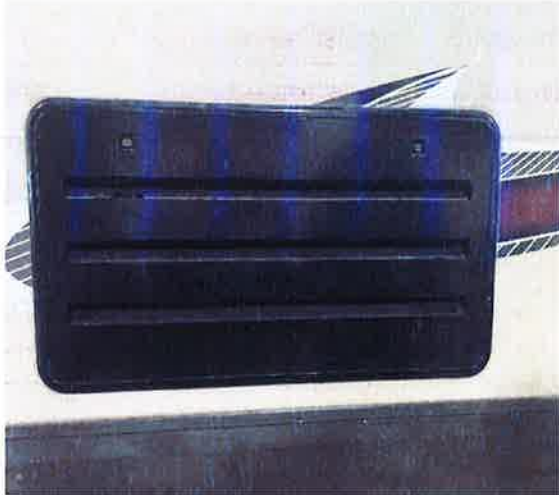
Promptly submit all pre-authorizations/claims through our Dealer Portal. If you have any questions or need assistance, please call our Technical Service Team at 888-825-2820.

Recall 2022-030 Repair Instructions

Tools: Screw gun, Phillips's screw bit, #8 x3/4" screws. screw mount cable ties, 2 X 4 for cribbing, manometer to perform drop test

Step 1:

Remove the outside lower refrigerator vent cover to access the rear of the refrigerator.



Step 2:

Inspect the 110-Volt wiring behind the refrigerator. It must be secured to the wall, away from the chimney and refrigerator cooling unit. Any signs of discoloration or charring on the insulation of the 110-Volt wiring will require that section of wiring to be replaced using Molex connectors in the refrigerator cavity.

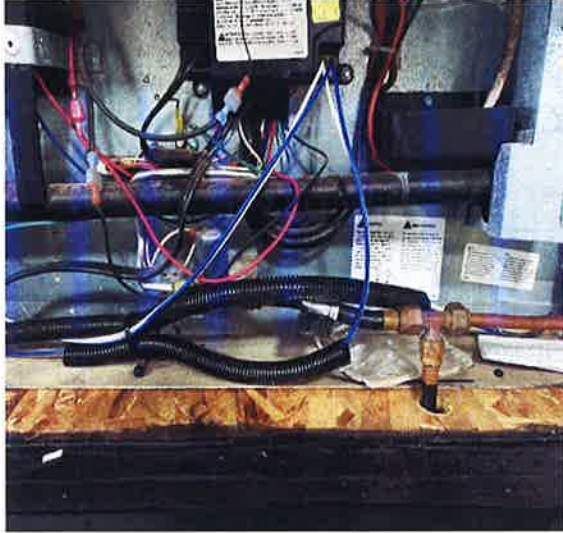


Step 3:

Turn off LP fuel supply (LP tank valves), remove and cap the LP line at the back of the refrigerator.

Step 4:

Disconnect the wiring to the control board in the back of the refrigerator.



Step 5:

Open the door(s) to the refrigerator, remove the upper and lower covers to access the screws securing the refrigerator in place.



Step 6:

Slide the refrigerator forward approximately 15"-18" out of the cavity. Use wood cribbing cut to height to support the front of the refrigerator. Be careful to use something soft to protect the flooring of the unit.



Step 7:

Access the refrigerator wiring through the exterior lower refrigerator vent.



Step 8:

Secure the 110V wires behind refrigerator. This is the time to repair any damaged wiring. Remove all slack from the wire by securing with additional screw mount cable ties and #8 X ¾" screws **every 12 inches**. When securing the wiring, screw into a wall cleat or wall tubing. If you attach to an open wall cavity, use a wall molly to hold the zip tie fast.



Step 9:

Once all 110-Volt wiring is secured to the wall, reinstall the refrigerator into position and secure with screws as discussed in Step 5.

Step 10:

Double check wiring clearance away from the refrigerator cooling unit.

Step 11:

Reinstall wiring to the refrigerator control board in Step 4.

Step 12:

Reinstall LP line. Perform drop pressure test to ensure there are no LP leaks.

Step 13:

Reinstall the lower refrigerator vent. Recall complete.