
Tri-Am RV

4 messages

Ashlee Olsen <ashlee@dealer-advisors.com>
To: mncleaner09@yahoo.com, asheville@fibrenew.com

Fri, May 1, 2026 at 10:39 AM

Good morning,

I am sending over the requested information, per your phone call with Stephanie this morning. Please let me know if you need anything further to get this taken care of.

Thank you,
Ashlee Olsen
Warranty Administrator
iClaims Services
www.iclaimsservices.com
208.716.2887

13 attachments



LINE 5 (2.jpg)
200K



LINE 5 (2).jpg
184K



LINE 5 (3.png)
1077K



LINE 5 TAG.png
1039K



LINE 5 (4.jpg
252K



LINE 5.jpg
201K



LINE 5.png
1113K



LINE 6 (4.jpg
201K



LINE 6 (2.jpg)
282K



LINE 6 (3.jpg)
198K



LINE 6 TAG.jpg
455K



LINE 6.jpg
240K

 **WO.pdf**
399K

Fibrenew Asheville <asheville@fibrenew.com>
To: Ashlee Olsen <ashlee@dealer-advisors.com>
Cc: mncleaner09@yahoo.com, Robert Vojtkofsky <swk@fibrenew.com>

Sun, May 3, 2026 at 7:01 PM

Thanks for sending the pictures. We actually need to refer you to Robert at Fibrenew SW Knoxville based on the location being in Midway TN (he's closer to you than we are here).

He's on copy here.

His contact info

Fibrenew SW Knoxville

Robert Vojtkofsky

865.437.4858

swk@fibrenew.com

fibrenew.com/sw-knoxville

Kind Regards,

Julie Kapugi
Michael Nally

FIBRENEW

Fibrenew Asheville
Leather, Plastic & Vinyl Restoration
828.774.6397
asheville@fibrenew.com
fibrenew.com/asheville

See amazing photos of the work we do!

Write a Google review about our service

We rely on satisfied customers to build our business through their referrals.
If you are happy with our service, please tell your friends.

Thank you for your business!

[Quoted text hidden]

[Quoted text hidden]

This message contains confidential information and is intended only for the individual named. If you are not the named addressee you should not disseminate, distribute or copy this e-mail. Please notify the sender immediately by e-mail if you have received this e-mail by mistake and delete this e-mail from your system.

Ashlee Olsen <ashlee@dealer-advisors.com>

Tue, May 5, 2026 at 4:07 PM

Cc: Robert Vojtkofsky <swk@fibrenew.com>, Tri-Am Tennessee Warranty <tnwarranty@triamrv.com>

Hi Robert,

Here's all the pictures we have of the couch for the estimate.

Stephanie at the dealership is included in this email and can answer any further questions you may have or get you further info.

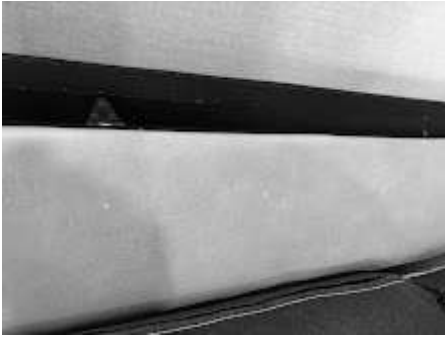
Thanks again for your help,
Ashlee

[Quoted text hidden]

--

[Quoted text hidden]

13 attachments



LINE 5 (2.jpg)
200K



LINE 5 (4.jpg)
252K



LINE 5 (2.jpg)
184K



LINE 5 (3.png)
1077K



LINE 5 TAG.png
1039K



LINE 5.jpg
201K



LINE 5.png
1113K



LINE 6 (4.jpg
201K



LINE 6 (3.jpg
198K



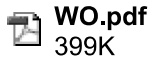
LINE 6 (2.jpg
282K



LINE 6 TAG.jpg
455K



LINE 6.jpg
240K



WO.pdf
399K

Robert Vojtkofsky <swk@fibrenew.com>
To: Ashlee Olsen <ashlee@dealer-advisors.com>
Cc: Tri-Am Tennessee Warranty <tnwarranty@triamrv.com>

Tue, May 5, 2026 at 4:38 PM

Ashlee,

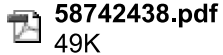
Here is an estimate that I would charge to repair this couch. Unfortunately this couch is made with Polyurethane and we can't repair it. It will not take any heat source because it's made with that material. I wrote the estimate as if it were vinyl or leather Hopefully this helps with what you need.

FIBRENEW

SW Knoxville
Robert Vojtkofsky
Reach us on our website
swk@fibrenew.com
contact: 865-437-4858

Leave us a Google Review

[Quoted text hidden]



58742438.pdf
49K